



RICHMOND SHINBUN

リッチモンド新聞

DAVE ALLEN PRINCIPAL

KRISTA BLOVAD ASSISTANT PRINCIPAL

11月の行事 November Events

18 – Japanese Hot Lunch Day

18 – PTA Family Movie Night

23-25 – Thanksgiving Break
(No School)

12月の行 December Events

02 – Principal's Coffee

07 – New Parent Tour

09 – PTA Craft Night

17 – Start of Winter Break
(No School)

01月の行 January Events

03 – School Starts Back

06 – Principal's Coffee

18 – Late Opening

16 – MLK, Jr. Day

18 – Late Opening

18 – Oya No Kai General Meeting

安全面に関するミーティング について

Safety Meeting

Safety Committee meetings will be held on the first Monday of each month from 8:10 – 8:30 a.m. The next safety meeting will be on December 5th.

RICHMOND NEIGHBORHOOD リッチモンド地域周辺

Some neighbors have raised concerns about parents blocking their driveway. If you are dropping off or picking up, please be aware of where you park so families can back out of their own driveways. In addition, one neighbor has had fruit thrown at her house twice in the last few weeks. Please contact the office if you know anything that could help in preventing future vandalism of this neighbor's house. We are always striving to be good neighbors with the Richmond community. Please join us in these efforts.

FIELD CLOSURE 校庭閉鎖のお知らせ

The field will be closed from November 14th to December 9th to install a walking path. Please make alternative plans if you use the field after school or on the weekend. (See page 3 for further information about the field closure.)

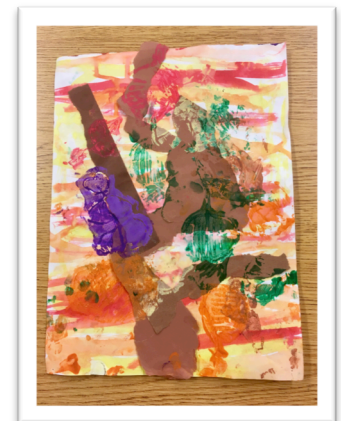


SUSTAINABILITY サステナビリティ 持続可能な社会づくりを

Richmond was recently mentioned in the *Portland Public Schools Sustainability Coordinators' Newsletter Fall 2016*. Here is what the article said, "Need to reduce your paper usage but don't know how? Well look no further! Richmond Elementary decided to cut down on paper this year by distributing newsletters and memos electronically. All students and staff can access these via email, with just a few dozen in print for those who prefer physical copies. They have already managed to save over 30,000 sheets of paper - that's a whole lot of paper! Not only will this reduce the amount of paper in distribution but will also reduce printing costs."

KINDERGARTEN ART SHOW ようちえんせいの アートショー

Students in Kindergarten created mixed media trees using watercolor, leaf rubbings, collage and printmaking techniques. The students used their knowledge of colors, lines and shapes to create their various layers. Students will be showing their work at the Belmont Library from November 14 through December 12th. There will be an opening for students and families on the 14th of November from 4:45 to 5:45 in the community room.



リッチモンドファンデーション RICHMOND FOUNDATION

Our thanks to the more than 400 readers and their families who participated in the Read For Richmond Read-A-Thon October 24-November 8! Together, our students read nearly 4,600 hours over two weeks, and Richmond friends and families pledged more than \$21,000 in support.

The RSF owes a tremendous debt of gratitude to parent volunteer Matt Giacomini, who created our brand new Read For Richmond web site, allowing us to keep more of your Read-A-Thon dollars here at Richmond. Thank you, Matt!

We are so grateful to our community for your support of the Read-A-Thon, but we have not yet met our fall fundraising goal of \$40,000. You can help us get there by making a gift to the Richmond School Foundation - every contribution received before Thanksgiving will count toward your child's classroom Read-A-Thon fundraising total. Visit <http://allhandsraised.org/donate/> or drop a check in the big blue mailbox near the front office!

You can also support the Foundation by taking your family out for a fantastic dinner this week. Stop by Pastini, on SE 20th and Division, on Monday or Tuesday (11/14-11/15). Be sure to mention Richmond, and Pastini will donate 50% of their proceeds to the RSF. It's the most delicious way to support our school!

Remember, your gift to the RSF funds teaching and staff positions at Richmond. Your support today is more important than ever. Together we can do it! 一緒に頑張ろう!

Thank you from the Richmond Foundation. Together we can do it! Issho Ni Ganbarou!

RICHMOND PTA NEWS リッチモンド PTA ニュース

Despite the rainiest October in memory, the weather didn't put a damper on an autumn full of fun! The Richmond community came together during a rare and lucky sun break for the Harvest Festival, orchestrated by PTA special events team Jamie Long and Saori Clark. This event, like all PTA activities, would not have been possible without Richmond parent volunteers- an enormous thank you to the over 78 cooks/bakers, food servers, bike rodeo monitors, bug scientists, t-shirt sellers, donut tie-ers and others who made this event a huge success! Together, we ate 46 dozen donuts, went through 250 balls of playdough with our fantastic interns, and had a wonderful time!

雨の多い10月で“したか”、そんなし“めし”めとした天気になげす”、本校(リッチモント“コミュニティー)によるハーベストフェスティバルが”10月29日に開催されました。

The season also brought visitors from our Japanese Sister School, Fukuno Elementary School, to Richmond. On Tuesday, November 1, Mr. Toru Saino, the volunteer exchange program coordinator on the Japan side since 1997, and the chaperones of the Nanto/Fukuno group were here on their annual exchange with Mt Tabor Middle School. The group toured Richmond and had a chance to see the dedication plaque and tree, an Orangebark Stewartia (a beautiful tree native to Japan), that was planted last year in honor of our longstanding friendship.

季節の便りと共に、11月1日(火曜日)本校の姉妹校である南砺市立福野小学校からお客様が”来校されました。1997年から(5年生の旅行の)文化交流の日本側コーディネーターとしてホランティアをされている西能徹(さいのうとおる)さんを団長とし、南砺市からの中学生グループが毎年恒例のマウントテーバー中学校との文化交流で訪問されていました。その期間中、西能さんは引率の先生方と一緒に本校を見学され、両校の長年の友情を記念して昨年記念植樹された Orangebark Stewartia (夏椿)の木とその記念プレートを見学されました。



Soon, no matter the weather, we'll be walking around our field without fear of mud! After being on hold for a year, the **Richmond Walking Path** is coming! Look for construction to begin in mid-November. Please talk with your children about the pending construction on the field, remind them that construction zones are not play zones, and to please respect the workers and equipment they will see on the Richmond playground in the coming weeks. Though the field will be off limits for a short period, the end result will allow for hours of outdoor play even after a rainy week. Many thanks to the PTA membership for their patience and support during the planning of this wonderful project.

リッチモンドウォーキングパスのお知らせ: もうすぐ、とんな季節でも泥んこを恐れず歩けるようになります! 1年間保留になっていたリッチモンドウォーキングパスの工事が11月中旬に始まります。工事現場ではくれくれも遊ばないように、また工事に使われる重機には触らないように、各ご家庭でお子さんにお話をされるようお願いいたします。工事の関係でフィールドが一時期使えなくなりますか、工事が終われば雨でも外で遊べるようになります。PTAメンバーシップのサポートにより実現したプロジェクトです。多くの協力ありがとうございます。

UPCOMING EVENTS 今後のイベントの予定

Japanese Hot Lunch November 18! The PTA Cultural Committee has teamed up with PPS Nutritional Services to provide a Japanese hot lunch at Richmond. On the menu is Japanese curry rice! The goal is to integrate this menu into PPS lunches served across the district and it is part of a larger effort to provide more culturally appropriate meals for all of PPS's diverse population of children. The more kids that try hot lunch on Friday the 18th, the more successful this effort will be. Teachers, feel free to join us for hot lunch on the 18th! Parents, please email Andrea Obana at andrea.obana@gmail.com if you can help with food prep that day.

11月18日(金) 日本食ホットランチ・テーマ: PTA文化委員会がPPSと取り組んで、リッチモンド小学校に於いて日本食のホットランチを試験的に提供することになりました。11月18日のメニューはカレーライスです! 将来的には、こういったメニューも多文化であるPPSの子供達の為に提供できるように活動していきます。PPSのホットランチ11月18日は是非日本食ホットランチを実食してみてください。また、料理が好きな方でお手伝いできる方は、Andrea Obanaさん andrea.obana@gmail.com までご連絡ください。



Lunchtime Volunteers Needed!

PTA's Super Green Team is rolling out reusable silverware and food waste composting in the Richmond cafeteria. To succeed, we need parent volunteers who can help out at lunchtime from 11-12:30 once per month. If you are interested in furthering Richmond's sustainability efforts and teaching our kids that they can make a difference through simple every day actions, please join us. We need about 15 more people to fill our volunteer slots. Email sarackdeluca@yahoo.com for more information.

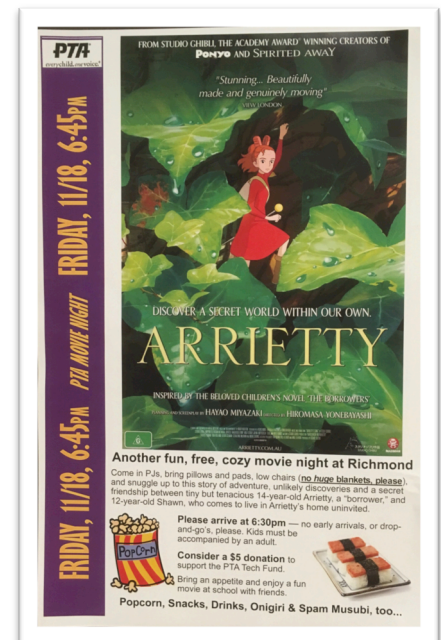
ランチタイム・オーカニック・フクロクラムのボランティア募集: スーパーグリーンチームは環境保護の為に、カフェテリアのキッチンからのゴミを減らす運動を始める予定です。ランチの食べ残し、食器、ゴミの分別ができるよう、子供達のアシストをするボランティアを募集中です。以前はゴミとして捨てられていた食べ残しがメタンガス発電に利用されることも含めて、この試みが子供への環境保護教育につながることを願っています。ボランティアに興味がある方は Sara DeLucaさん (sarackdeluca@yahoo.com)までご連絡ください。

Clothing Center Volunteer Day On Monday Oct. 17, super Richmond PTA volunteers Naomi Easton, Emily and Brandon Martine, Monique Sevy, Ben Carr, Lesley Reppeteaux and Robyn Draheim helped staff the PTA Clothing Center located at the Marshall High School Campus. The clothing center serves Portland Public Schools families in need, and helps 30-40 kids each volunteer day. This amazing resource is just one way Portland PTAs give back to the community. To assist with this effort, Richmond PTA will **take donations of new socks, underwear and gloves/scarves on movie night, Friday 11/18**. Our next volunteer day at the clothing center is Monday, March 20. If you would like to help, please contact richmondptapdx@gmail.com.

11月18日(金)靴下、下着ハインツ、手袋、マフラーの寄付のお願い: 10月17日にスーハーリッチモントPTAのNaomi Eastonさん, Emily Martinさん, Brandon Martineさん, Monique Sevyさん, Ben Carrさん, Lesley Reppeteauxさん, Robyn DraheimさんがMarshall High Schoolで行われたPTA Clothing Centerにボランティアとして参加されました。PTA Clothing CenterはPPSに通っている子供達のために服を寄付するボランティア活動です。1日の活動で30人から40人の子供の服を寄付します。ぜひこの活動に協力ください。リッチモントPTAでは11月18日(金)のMovie Nightの際に寄付を集めます。今、寄付が必要な物は、新品の靴下、ハインツ(下着)、手袋、マフラーです。なお、次の活動日は3月20日(月)です。お手伝いに参加できる方はrichmondptapdx@gmail.comまでご連絡ください。

Put on your PJs, grab your pillows and blankets and join us for **Movie Night!** Our next movie night is on Friday, November 18! We will be showing **The Secret World of Arrietty** at 6:30 pm. Rich Coffee will be at this event, selling popcorn and treats, and our 5th graders will be offering something delicious to support their trip fund! This is a family event, everyone is welcome, but no dropoffs, please! In lieu of cash donations, if you are able to, please bring new socks and underwear to donate to the Portland PTA Portland Clothing Center!

11月18日(金)ムービーナイト: ハインツを着て、枕とフラインクケットを持ったらムービーナイトに行こう! ムービーナイトが11月18日(金)午後6時30分に行われます! 今回の映画は **The Secret World of Arrietty** です。リッチコーヒーからポップコーンとお菓子の販売、また5年生は旅行の資金をサポートする為の“おいしいもの”の販売もします。ご家族皆さんで参加ください。保護者同伴が必要ですので、子供たちだけで参加/トロッポフは遠慮ください。ムービーナイトの際にPortland PTA Portland Clothing Centerが新品の靴下、ハインツ(下着)、手袋、マフラーの寄付を集めます。そちらの方も協力ください。



Have your kids outgrown their spirit wear? Bring your gently used **Bulldog gear**, Oya no Kai wear or Foundation swimmy shirts to the donation box in the Mailroom (Room 110)! Parent volunteers will wash shirts and ready them for their new owners! If you need a shirt, our wonderful counselors Claudia Sterry and Lizzy O'Leary have volunteered to keep clean spirit wear in their office; anyone is welcome to visit them to shop for spirit wear. **New gear is available now at our Richmond PTA web store** <https://mkt.com/richmond-pta>. Your order will be completed within a few days, and can be delivered to a classroom or left in room 110 with your name on it. Bulldog gear also makes an affordable holiday gift, with prices at just \$7.50 for a children's sized t-shirt!

Spirit Wear(スプリットウエア)リサイクル、販売のお知らせ: もう着ていないスプリットウエア(Bulldog gear, Oya no Kai wear or Foundation swimmy shirts)はありませんか? また着られそうな物がありましたら、寄付をお願いします。Mailroom (Room 110)に回収箱を設置してありますのでそちらに入れてください。ボランティアの保護者の方がきれいに洗います。その後、スクールカウンセラーの Claudia Sterry 先生と Lizzy O'Leary 先生のオフィスで古着のスプリットウエアの販売をします。となたでも買う事ができます。新品の物をご希望の方は **Richmond**

PTA web store <https://mkt.com/richmond-pta> で “お申し 込みくた さい。数日て “各教室、または Room 110 にお届けします。 子供の Bulldog T シャツはたったの\$7.50!ホリテ “キー “フトにいかか “て “しょうか?”

Buy Coffee to Help Save our Elms! PTA is again selling Portland Roasting Coffee to support protection of the Elm trees on our school grounds against Dutch Elm Disease. Inoculation and preventative pruning should help protect the trees from this deadly fungus. Coffee beans and order forms are available at the Rich Coffee table and in the "Elms" mailbox in Room 110.

コーヒー豆を買って木を救おう!: PTA で “は本校の敷地内に立つ Elms Trees (エルム/ニレ科の木)の保護のため Portland Roasting Coffee のコーヒ豆を販売しています。Elms Trees は致命的な 菌の感染を防く “為に接種や剪定が “必要で “す。コーヒー豆のオータ “ーフォーム(注文書)は Room 110 のメールホ “ックス"Elms" または、朝のリッチコーヒの販 売の際にも受け付けています。



The **Shamrock Run**, Portland's biggest running event, is a great opportunity to donate to Doernbecher Children's hospital, and to support our PTA! Please consider joining the 5K, 8K, 15K or half marathon; it is a great way for the whole family to get exercise and have fun! If can form a “super team” like last year the Richmond PTA will receive \$5 per adult registration! It is open to all, and you can invite your friends and neighbors to our team. Registration is now open at <http://www.shamrockrunportland.com/>. Early birds get a discount! Richmond’s team number is 2885 (friends team). Please contact Shuli Rutzick, team captain at shulirutzick@gmail.com with any questions.

シャムロックラン: ホ “ートラント “で “最大規模のマラソン The **Shamrock Run**(シャムロックラン)、に参加して Doernbecher Children's Hospital とリッチモント “の PTA をサホ “ートしよう!マラソンは 5K、8K、15、とハーフマラソンのオフ “ションが “あります。こ “家族皆さんて “、運動も兼ねて是非こ “参加くた “さい。インターネットで “の受付は既に始まっています。 <http://www.shamrockrunportland.com/> で “レシ “スターて “きます。リッチモント “のチームナンバ “ーは 2885。こ “質問は Shuli Rutzick さん shulirutzick@gmail.com まで “お願いします。

Japanese Translators for the Shinbun needed! Many hands make light work! If you are willing to volunteer some time to help with Japanese translation for parts of the Shinbun, please contact richmondptapdx@gmail.com

日本語の翻訳ホ “ランティア募集: リッチモント “新聞を日本語に翻訳て “きる方を探しています。興味のある方は richmondptapdx@gmail.com まで “こ “連絡くた “さい。

Lost and Found Clothing Area: Don't forget to check for lost items! Hats, coats, sweatshirts and water bottles are still piling up in the lost and found! Thanks to parent volunteers, the lost and found is no longer terrifying but it takes constant vigilance. Please take a minute or two to help out by checking out the area, hanging up clothes left on the floor and sorting the small items.

無くし物、忘れ物の保管場所: リッチモント “に無くし物や忘れ物が “保管してある場所か “あるのをこ “存知て “すか? 始業後やお迎えの前の時間など “、是非忘れ物保管場所に一度立ち寄ってお子さんのアイテムが “埋もれていないかチェックしてくた “さい。



OYA NO KAI UPDATE 親の会のお知らせ

We have had such a great launch into fall! Last month Richmond and Mt Tabor hosted two visiting schools from Japan. Katoh school is very close to Mt Fuji and is an English immersion program. Visiting students shadowed our 5th graders and stayed for over a week with our Richmond families. By mid-week, it was impossible to tell the difference between our students and visitors, as they were fast friends and all Bulldogs. Students from Nanto school near the Sea of Japan also visited Mt Tabor. Their chaperones and the founder of our school relationship, Mr. Saino, toured Richmond and were able to see the tree planted in their honor in the North Japanese garden. All students enjoyed being here Halloween weekend and participating in the Harvest Festival.

A special thank you goes out to our interns and 5th grade families for making an extra effort for both games and activities at the Harvest Festival, but also selling Chinook books, Blazers raffle tickets, and making the Japanese treat imagawayaki. The imagawayaki grills were made available by the organization, Friends of Japan in Oregon. The 5th grade raised \$1000 for their exchange

trip from sales of these treats!

Finally, I have an exciting announcement! The Richmond PTA and Oya No Kai have secured a donation from Classic Pianos Portland for a new Yamaha piano to be delivered to Richmond this year! Additionally, all you music students will be glad to know that Richmond faculty families and friends will be able to receive educational pricing on buying a piano for your home through this agreement - and any piano you buy for home will help toward earning another piano for Richmond! It's such a win-win for everyone in celebration of music. The donated piano will be available for performances in the cafeteria and will be circulating through classrooms with teachers who use the piano in classroom learning. Keep an eye and ear out for this new instrument which is arriving this week!

Jeff Hopper
President, Oya No Kai



Dear Parents,

The "Counselor's Corner" monthly newsletter will now be on my new blog on our Richmond Counseling website. This month's blog has great resources for parents on our November theme of Sibling Rivalry, as well as two new tutoring referrals. Please check it out at <http://richmondcounseling.weebly.com/blog> ! All other information about the Richmond counseling program, other parent resources, and our contact info can be found on the website as well.

Sincerely, Ms. Sterry and Ms. O'Leary

Portland Public Schools recognizes the diversity and worth of all individuals and groups and their roles in society. It is the policy of the Portland Public Schools Board of Education that there will be no discrimination or harassment of individuals or groups on the grounds of age, color, creed, disability, marital status, national origin, race, religion, sex or sexual orientation in any educational programs, activities or employment.

Richmond Elementary School • 2276 SE 41st Avenue
• Portland, OR 97214 • 503 916-6220 • Visit us at
<http://www.pps.net/richmond> or follow us on
Twitter at <https://twitter.com/richmondjmp>